

**BASIC DETAILS**

65278--NOTRE DAME ACADEMY NTPC PO BARH PATNA BIHAR

Dated : 14/08/2023

<b>SCHOOL NAME</b>	NOTRE DAME ACADEMY NTPC PO BARH PATNA BIHAR	<b>SCHOOL CODE</b>	65278
<b>ADDRESS</b>	NOTRE DAME ACADEMY,NTPC PO,BARH	<b>AFFILIATION CODE</b>	330282
<b>PRINCIPAL</b>	MS SISTER MARY SUNITA	<b>PRINCIPAL'S CONTACT NUMBER</b>	7634861236
<b>PRINCIPAL'S EMAIL ID</b>	notredamebarh@gmail.com	<b>PRINCIPAL'S RETIREMENT DATE</b>	30/09/2033
<b>SCHOOL'S CONTACT NUMBER</b>	0613-2240070	<b>SCHOOL'S EMAIL ID</b>	notredamebarh@gmail.com
<b>SCHOOL'S WEBSITE</b>	www.notredamebarh.co.in	<b>SCHOOL'S FAX NUMBER</b>	06132240070
<b>LANDMARK NEAR SCHOOL</b>	NTPC STPP BARH TOWNSHIP	<b>YEAR OF ESTABLISHMENT</b>	2007
<b>AFFILIATION VALIDITY</b>	2010 TO 2025	<b>AFFILIATION STATUS</b>	PROVISIONAL
<b>NAME OF THE TRUST/SOCIETY/COMPANY REGISTERED WITH</b>	PATNA NOTRE DAME SISTERS SOCIETY	<b>REGISTRATION DATE</b>	29/04/1949
<b>SOCIETY REGISTRATION NUMBER</b>	5 of 1949-50	<b>REGISTRATION VALIDITY</b>	PERMANENT REGISTRATION
<b>NOC ISSUING AUTHORITY</b>	STATE (BIHAR)	<b>NOC ISSUING DATE</b>	15/12/2009
<b>NO OBJECTION CERTIFICATE</b>	<b>VIEW (ViewPdfFiles.aspx? FileName=/XFhM8Ovecyj8mj/Wq6t66zSDLFNOR9lb/uv2F+72Q=)</b>	<b>NON PROPRIETARY CHARACTER AFFIDAVIT/NON PROFIT COMPANY AFFIDAVIT</b>	<b>VIEW (ViewPdfFiles.aspx? FileName=qMb84e36f+2DXihpB6Wy6y19U9OLL0FzOAY62HPf)</b>
<b>WHETHER SCHOOL IS RUNNING MORNING/ EVENING/ DOUBLE SHIFT?</b>	Morning	<b>CURRENTLY RUNNING CLASSES FROM</b>	BAL VATIKA 1 TO XII
<b>WHETHER OFFERED VOCATIONAL/SKILL SUBJECTS?</b>	Yes	<b>CLASSES WHERE SKILL SUBJECTS ARE OFFERED</b>	

**FACULTY DETAILS**

65278--NOTRE DAME ACADEMY NTPC PO BARH PATNA BIHAR

Dated : 14/08/2023

<b>TOTAL NUMBER OF TEACHERS (ALL CLASSES)</b>	35	<b>NUMBER OF PGTs</b>	8
<b>NUMBER OF TGTs</b>	12	<b>NUMBER OF PRTs</b>	10
<b>NUMBER OF PETs</b>	1	<b>OTHER NON-TEACHING STAFF</b>	13
<b>NUMBER OF MANDATORY TRAINING QUALIFIED TEACHERS</b>	35	<b>NUMBER OF TRAININGS ATTENDED BY FACULTY SINCE LAST YEAR</b>	900
<b>WHETHER SPECIAL EDUCATOR APPOINTED?</b>	NO	<b>WHETHER COUNSELLOR AND WELLNESS TEACHER APPOINTED?</b>	YES
<b>HAS MANDATORY TRAINING OF TEACHERS AS PER THE TRAINING POLICY (SECTION-16 OF AFFILIATION BYE-LAWS) (<a href="http://cbseaff.nic.in/cbse_aff/attachment/onlineservices/affiliation-Bye-Laws.pdf">http://cbseaff.nic.in/cbse_aff/attachment/onlineservices/affiliation-Bye-Laws.pdf</a>) BEEN COMPLETED?</b>	YES	<b>NUMBER OF NTTs</b>	4

**STUDENT DETAILS**

65278--NOTRE DAME ACADEMY NTPC PO BARH PATNA BIHAR

Dated : 16/08/2023

CLASS	TOTAL NUMBER OF SECTIONS (FOR RUNNING CLASSES)	MAXIMUM PER CLASS INTAKE	TOTAL NUMBER OF GIRLS	TOTAL NUMBER OF BOYS	TOTAL NUMBER OF TRANS-GENDER	TOTAL NUMBER OF STUDENTS	TOTAL NUMBER OF CWSN (BOYS,GIRLS & TRANS-GENDERS)
Bal Vatika 1(Pre-School)	0	0	0	0	0	0	0
Bal Vatika 2(Pre-School)	3	40	56	40	0	96	0
Bal Vatika 3(Pre-School)	3	40	51	51	0	102	0
1	3	40	41	50	0	91	0
2	3	40	42	48	0	90	0
3	3	40	51	50	0	101	0
4	3	40	38	46	0	84	0
5	3	40	36	47	0	83	0
6	3	40	35	50	0	85	0
7	3	40	39	47	0	86	0
8	3	40	31	46	0	77	0
9	2	40	31	41	0	72	0
10	2	40	28	50	0	78	1
11	1	40	0	0	0	0	0
12	1	40	5	3	0	8	0

**ACADEMIC DETAILS**

65278--NOTRE DAME ACADEMY NTPC PO BARH PATNA BIHAR

Dated : 19/08/2023

SKILL SUBJECTS OFFERED FOR CLASS 6 to 8	SUBJECTS OFFERED FOR CLASS 10	SUBJECTS OFFERED FOR CLASS 12
906---Information Technology-Class VI Only	241---MATHEMATICS BASIC 041---MATHEMATICS 086---SCIENCE 087---SOCIAL SCIENCE 184---ENGLISH LANG & LIT. 085---HINDI COURSE-B 402---INFORMATION TECHNOLOGY	044---BIOLOGY 043---CHEMISTRY 301---ENGLISH CORE 029---GEOGRAPHY 027---HISTORY 041---MATHEMATICS 048---PHYSICAL EDUCATION 042---PHYSICS 028---POLITICAL SCIENCE

**INFRASTRUCTURE DETAILS**

65278--NOTRE DAME ACADEMY NTPC PO BARH PATNA BIHAR

Dated : 19/08/2023

<b>TOTAL NUMBER OF SITES OF SCHOOL</b>	1
<b>NUMBER OF STOREIES IN THE BUILDING</b>	1
<b>TOTAL NUMBER OF PLAYGROUNDS</b>	3
<b>TOTAL CLASSROOMS</b>	35
<b>TOTAL NUMBER OF MEDIUM-SIZED ROOMS</b>	3
<b>DOES THE SCHOOL HAVE A BOUNDARY WALL?</b>	YES
<b>TOILETS FOR MALE STAFF</b>	5
<b>AVAILABILITY OF SANITARY PAD VENDING MACHINE</b>	YES
<b>NUMBER OF LABORATORIES</b>	4
<b>TOTAL NUMBER OF STAFF CANTEENS</b>	0
<b>NUMBER OF AUDITORIUMS</b>	1
<b>NUMBER OF DIGITAL CLASSROOMS</b>	18
<b>DOES THE SCHOOL HAVE GUARDS EMPLOYED FOR SAFETY</b>	YES
<b>DOES THE SCHOOL HAVE SPRINKLERS</b>	YES
<b>IS THE SCHOOL EXAMINATION CENTER OF CBSE?</b>	NO
<b>DOES THE SCHOOL HAVE WEB SERVERS</b>	NO

<b>DOES THE SCHOOL HAVE A STRONG ROOM/ ROOM FOR STORING CONFIDENTIAL MATERIALS?</b>	NO
<b>IS YOUR SCHOOL WI-FI ENABLED?</b>	YES
<b>DOES THE SCHOOL HAVE FIRE ALARMS?</b>	NO
<b>DOES THE SCHOOL HAVE INDOOR GAMES FACILITY?</b>	YES
<b>DOES THE SCHOOL HAVE DANCE/MUSIC FACILITY?</b>	YES
<b>TOTAL NUMBER OF BUSES HIRED</b>	0
<b>TOTAL NUMBER OF DRIVERS</b>	0
<b>NUMBER OF ACTIVITY ROOMS</b>	5
<b>TRANSPORT COORDINATOR CONTACT</b>	0
<b>TRANSPORT SAFETY CERTIFICATE</b>	<a href="#">VIEW (ViewPdfFiles.aspx?FileName=gvLodyEtmr+I/BIHx7Tn7iauYVz8WWHn7WIXOvqFvyKiNleYC6TrWBaGyBhVQBxK)</a>
<b>IS THE SCHOOL INFRASTRUCTURE BEING USED FOR ANY COMMERCIAL ACTIVITY?</b>	NO
<b>OTHER DETAILS</b>	
<b>TOTAL BOOKS AVAILABLE IN THE SCHOOL LIBRARY</b>	6347
<b>DAILIES IN THE SCHOOL LIBRARY</b>	4

<b>FICTION BOOKS IN THE SCHOOL LIBRARY</b>	1650
<b>OTHER BOOKS IN THE SCHOOL LIBRARY</b>	75
<b>LIBRARY RESOURCES</b>	4
<b>LIBRARY SIZE (IN SQ. METERS)</b>	56.78
<b>COMPOSITE SCIENCE LAB SIZE (IN SQ. METERS)</b>	86.78
<b>PHYSICS LAB SIZE (IN SQ. METERS)</b>	86.78
<b>DOES IT HAVE LIBRARY INTERNET</b>	YES
<b>WHETHER SCHOOL HAS SINGLE CONTIGUOUS PLOT ?</b>	Yes
<b>DISTANCE BETWEEN TWO SITES OF THE SCHOOL</b>	0
<b>BIOLOGY LAB SIZE (IN SQ. METERS)</b>	86.78
<b>CERTIFYING THAT NO OTHER INSTITUTION (APART FROM SCHOOL) IS RUNNING IN THE CLAIMED LAND AREA</b>	Yes
<b>HOW MANY ROOMS LESS THAN 400 SQ FT</b>	0
<b>DOES THE SCHOOL HAVE RAMPS FOR PHYSICALLY HANDICAPPED?</b>	YES
<b>RAMPS/LIFTS FOR ACCESSING UPPER FLOORS</b>	<a href="#">VIEW (ViewImages.aspx?ImageID=ray6ouFcPZ6KU/dsIMgOoHcBfFv2agsY7TNU05xfGgj7Yng0R2WBAw7HtjVtCw8No3ZvmEAVGxi2dn8IkucnaJNSWwjXU08XH/McrYIbj26SuJN28Q4k3or</a>
<b>NAME OF CYBER NODAL OFFICER</b>	Raman Kumar

<b>EMAIL ID OF CYBER NODAL OFFICER</b>	raman.kr08@gmail.com
--	----------------------

### Other Infrastructure Details

S.No.	Description	Minimum Size(as per SOP)	No. of Units Available
1	ClassRoom (For running Classes)	Greater than equal to 500 sq ft (46.45 sqm)	35
2	Other Rooms	Greater than 500 sq ft (46.45 sqm)	12
3	Other Rooms	Less than 500 sq ft (46.45 sqm)	2
4	Composite Science Lab	Greater than equal to 600 sq ft (55.74 sqm)	1
5	Mathematics Lab	Greater than equal to 500 sq ft (46.45 sqm)	1
6	Physics Lab	Greater than equal to 600 sq ft (55.74 sqm)	1
7	Chemistry Lab	Greater than equal to 600 sq ft (55.74 sqm)	1
8	Biology Lab	Greater than equal to 600 sq ft (55.74 sqm)	1
9	Computer Lab	Greater than equal to 600 sq ft (55.74 sqm)	1
10	Library	Greater than equal to 1200 sq ft (111.48 sqm)	1
11	Music Room	Greater than equal to 500 sq ft (46.45 sqm)	1
12	Dance Room	Greater than equal to 500 sq ft (46.45 sqm)	1
13	Special Educator Room	Greater than equal to 500 sq ft (46.45 sqm)	0
14	Strong Rooms		0
15	Girl's Toilet		8
16	Boy's Toilet		8
17	Toilet for CWSN(For Boys)		0
18	Toilet for CWSN(For Girls)		0
19	Girls Urinal with partition		16
20	Boys Urinal with partition		16

### Digital Infrastructure Details

S.No.	Description	Minimum Requirement	No. of Units Available
1	Computers (Desktop/Laptop) with Internet Connectivity	01 Computer System per 18 students interconnected with a single LAN network with audio- video input & output (Webcam/Speakers etc). Minimum 40 computer Systems	20
2	Server (to be used as server for Assessment/Examination purposes)	At least one Computer System with high configuration	0
3	Data backup device-either Cloud base or Physical (external HDD) for all kinds of data storage	Mandatory	1
4	Internet Connectivity (Lease Line/Wi-Fi) with high speed	Mandatory	1
5	Printers/Scanners	At Least 2 Printers/2 Scanners	5
6	UPS-To support all computer systems in lab for providing power backup to ensure uninterrupted power supply	Mandatory	20
7	Licensed Software including Anti-Virus and other Security systems for Digital Infrastructure	Mandatory	25



8	Digital Smart Boards	Mandatory	18
---	----------------------	-----------	----

**LOCATION DETAILS**

65278--NOTRE DAME ACADEMY NTPC PO BARH PATNA BIHAR

Dated : 16/08/2023

<b>NEAREST NATIONALISED BANK</b>	STATE BANK OF INDIA	<b>DISTANCE OF BANK FROM SCHOOL IN KM</b>	1.5
<b>NEAREST BUS STATION</b>	BARH	<b>DISTANCE OF BUS TERMINAL FROM SCHOOL IN KM</b>	6
<b>NEAREST RAILWAY STATION</b>	BARH	<b>DISTANCE OF RAILWAY STATION FROM SCHOOL IN KM</b>	6
<b>NEAREST AIRPORT</b>	PATNA	<b>DISTANCE OF AIRPORT FROM SCHOOL IN KM</b>	70
<b>NEAREST HOSPITAL</b>	NTPC HEALTH CLINIC	<b>DISTANCE OF HOSPITAL FROM SCHOOL IN KM</b>	1.5
<b>NEAREST POLICE STATION</b>	NTPC POLICE STATION	<b>DISTANCE OF POLICE STATION FROM SCHOOL IN KM</b>	0.5
<b>NEAREST METRO STATION</b>		<b>DISTANCE OF METRO FROM SCHOOL IN KM</b>	

**CONTRIBUTION TOWARDS ENVIRONMENT PROTECTION**

65278--NOTRE DAME ACADEMY NTPC PO BARH PATNA BIHAR

Dated : 16/08/2023

WHETHER RAIN WATER HARVESTING HAS BEEN DONE IN THE CAMPUS?	YES	WHETHER ROOF WATER HARVESTING IS BEING UNDERTAKEN BY THE SCHOOL?	NO
WHETHER HARVESTED WATER IS RECYCLED FOR GARDENING, ETC?	YES	WHETHER SCHOOL ENSURES MAINTENANCE OF ALL WATER FAUCETS/PIPES ETC TO PREVENT ANY LEAKAGES?	YES
WHETHER SEGREGATION OF WASTE IS DONE AT SOURCE?	YES	WHETHER ORGANIC WASTE IS BEING RECYCLED?	YES
WHETHER WASTE PAPER IS RECYCLED?	YES	WHETHER SCHOOL IS MAKING EFFORTS TO REDUCE USE OF PAPER BY ADOPTING IT SOLUTIONS?	YES
WHETHER THERE IS PROPER DISPOSAL OF SOLID WASTE?	YES	WHETHER THERE IS A SYSTEM FOR DISPOSAL OF ELECTRONIC WASTE?	NO
WHETHER SCHOOL IS USING ENERGY SAVING AND ENERGY EFFICIENT ELECTRICAL EQUIPMENT?	YES	WHETHER PLANTATION/GARDENING HAS BEEN DONE IN AND AROUND CAMPUS?	YES
WHETHER DRIP IRRIGATION IS THE ONLY MEANS OF WATERING THE GARDEN?	YES	WHETHER SCHOOL IS USING SOLAR ENERGY?	NO
WHETHER WASTE WATER FROM RO PLANT FOR DRINKING WATER IS BEING HARVESTED/RECYCLED?	YES	WHETHER SCHOOL IS PROMOTING AWARENESS AMONGST CHILDREN AND PARENTS ON ENVIRONMENTAL CONSERVATION AND CLEANLINESS?	YES
WHETHER CHILDREN ARE BEING TAUGHT HOW TO AUDIT THE USE OF WATER AND WHETHER THEY ARE BEING ENCOURAGED TO TAKE IT UP AT HOME?	YES	WHETHER CHILDREN ARE TAKING UP WATER AUDITING AT SCHOOL?	YES
WHETHER ENVIRONMENTAL LITERACY IS PROMOTED THROUGH INTEGRATION IN ACADEMICS?	YES	WHETHER TREES HAVE BEEN PLANTED BY STUDENTS, IN SCHOOL AT HOME/IN NEIGHBOURHOOD IN THE CURRENT ACADEMIC YEAR?	YES
WHETHER CONSERVATION OF ENVIRONMENT IS PROMOTED?	YES	TOTAL TREES PLANTED? (BY STUDENTS AND TEACHERS)	218
TOTAL AMOUNT OF WATER CONSERVED (IN LITRES)? (BY STUDENTS AND TEACHERS)	110	TARGET DATE FOR STOPPING USE OF POLYTHENE	31/03/2025
HAS THE SCHOOL CONSTITUTED YOUTH CLUBS?	NO	WHETHER THE SCHOOL DISASTER RECOVERY MANAGEMENT PLAN DEVELOPED IN SCHOOL OR NOT?	NO
AVAILABILITY OF KITCHEN GARDEN	YES	DO YOU HAVE ECO-CLUB?	YES
HOW MANY ECO-CLUB IN YOUR SCHOOL?	05	HOW MANY STUDENTS IN YOUR ECO-CLUB?	110

**CHAIRMAN/PRESIDENT'S CORRESPONDENT DETAIL AND SMC**

65278--NOTRE DAME ACADEMY NTPC PO BARH PATNA BIHAR

Dated : 16/08/2023

<b>CHAIRMAN/PRESIDENT'S/ CORRESPONDENT NAME</b>	SISTER M TESSY	<b>CHAIRMAN/PRESIDENT'S/ CORRESPONDENT ADDRESS</b>	PNDSS PATLIPUTRA PATNA
<b>CHAIRMAN/PRESIDENT'S/ CORRESPONDENT PHONE (OFFICE)</b>	9431012788	<b>CHAIRMAN/PRESIDENT'S/ CORRESPONDENT PHONE (RESIDENCE)</b>	9431012788
<b>SECRETARY NAME</b>	SISTER M SUNITA	<b>TOTAL MEMBERS</b>	15
<b>WHETHER THE SCHOOL MANAGING COMMITTEE HAS BEEN CONSTITUTED AS PER OF REQUIREMENTS OF AFFILIATION BYE-LAWS?</b>	Yes		

**SCHOOL WEBSITE INFORMATION**

65278--NOTRE DAME ACADEMY NTPC PO BARH PATNA BIHAR

Dated : 16/08/2023

<b>URL OF SCHOOL WEBSITE</b>	www.notredamebarh.co.in	<b>DETAILS OF CURRICULUM</b>	No
<b>SCHOOL MANAGING COMMITTEE INFORMATION</b>	Yes	<b>TRANSFER CERTIFICATE SAMPLE</b>	Yes
<b>NORMS FOLLOWED FOR FIXING FEE</b>	Yes	<b>SELF AFFIDAVIT OF SCHOOL</b>	No
<b>AFFILIATION STATUS (MIDDLE/SECONDARY/SENIOR SECONDARY)</b>	Yes	<b>DETAILS OF INFRASTRUCTURE</b>	Yes
<b>DETAILS OF TEACHERS INCLUDING QUALIFICATIONS</b>	Yes	<b>DETAILS OF TEACHERS TRAINING</b>	Yes
<b>THE NUMBER OF STUDENTS CLASS WISE</b>	Yes	<b>LIST OF BOOKS PRESCRIBED IN VARIOUS CLASSES</b>	Yes
<b>ANNUAL REPORT</b>	No	<b>SCHOOL CIRCULARS</b>	Yes
<b>POSTAL ADDRESS AND E-MAIL, TELEPHONE NOS. OF SCHOOL AND AUTHORITIES</b>	Yes	<b>AS PER THE SECTION (2.4.9) OF AFFILIATION BYE-LAWS, INFORMATION WITH REGARD TO FEES CHARGED FOR EACH CLASS</b>	Yes
<b>PERIOD OF AFFILIATION</b>	Yes	<b>ACADEMIC CALENDAR OF THE SCHOOL</b>	Yes
<b>AS PER THE SECTION (2.4.7 (B)) OF AFFILIATION BYE-LAWS, WRITTEN DECLARATION DULY SIGNED BY THE MANAGER AND THE PRINCIPAL TO THE EFFECT THAT THEY HAVE GONE THROUGH THE CONTENTS OF THE BOOKS PRESCRIBED BY THE SCHOOL AND OWN THE RESPONSIBILITY</b>			No
<b>ACADEMIC ACHIEVEMENTS; WRITE UP ON ALL EFFORTS MADE IN THE FIELD OF ENVIRONMENT EDUCATION, SPORTS ACHIEVEMENTS, INNOVATIONS, OVERALL RESULTS, PTA ACTIVITIES, IMPORTANT SMC DECISIONS BEEN ADDED IN ANNUAL REPORT OF THE SCHOOL</b>			Yes

## OTHER VITAL INFORMATION

65278--NOTRE DAME ACADEMY NTPC PO BARH PATNA BIHAR

Dated : 16/08/2023

10th BOARD PASS PERCENTAGE (2014/2015/2016)	100/100/100	12th BOARD PASS PERCENTAGE (2014/2015/2016)	100/100/0
NAME OF WELLNESS/ACTIVITY TEACHER	YES	NAME OF GRIEVANCE/COMPLAINT REDRESSAL OFFICER	POMPY ROY
CONTACT NUMBER OF GRIEVANCE/COMPLAINT REDRESSAL OFFICER	7763968539	EMAIL ID OF GRIEVANCE/COMPLAINT REDRESSAL OFFICER	POMPIROYNDA@GMAIL.CC
NAME OF HEAD OF SEXUAL HARASSMENT COMMITTEE	Sister Saina	CONTACT NUMBER OF HEAD OF SEXUAL HARASSMENT COMMITTEE	9430841456
EMAIL ID OF HEAD OF SEXUAL HARASSMENT COMMITTEE	notredamebarh@gmail.com	NAME OF CONTACT PERSON IN CASE OF EMERGENCY	Sister M SUNITA
CONTACT NUMBER OF CONTACT PERSON IN CASE OF EMERGENCY	9430401626	EMAIL ID OF CONTACT PERSON IN CASE OF EMERGENCY	notredamebarh@gmail.co
TOTAL NUMBER OF DOCTORS IN SCHOOL CLINIC	0	TOTAL NUMBER OF NURSES IN SCHOOL CLINIC	0
TOTAL NUMBER OF BEDS IN SCHOOL CLINIC	0	LEVEL OF INVOLVEMENT OF SCHOOL IN CBSE ACTIVITIES	ACTIVE
DO THE TEACHERS GET PROPER GRADE LIKE PGT/TGT AS PER THE CLASSES THEY ARE ENTITLED TO TEACH?	YES	DO THE TEACHERS AND STAFF GET THEIR SALARY WITHIN FIRST WEEK OF THE MONTH?	YES
DOES THE SCHOOL HAVE EPF FACILITY FOR STAFF	YES	EPF REGISTRATION NUMBER	BR\PAT\4101-A
MODE OF SALARY PAYMENT	bankpayment	NAME OF BANK WITH SALARY ACCOUNT	STATE BANK OF INDIA
ARE THE SCHOOL ACCOUNTS AUDITED REGULARLY?	YES	PARENT TEACHERS ASSOCIATION AS PER NORMS	YES
ACADEMIC SESSION	APRIL TO MARCH	VACATION PERIOD	MAY TO JUNE
AUDITED BALANCE SHEET OF SCHOOL	VIEW (ViewPdfFiles.aspx?FileName=qCLFSQIA4UKKJtQkzJRq5weDTIIRI/h7tpbylK6rRlPgjsM4Mvtd2Vtrr31PHOD2)	STAFF STATEMENT OF SCHOOL	VIEW (ViewPdfFiles.aspx?FileName=aMwl22ClcdBI
INCOME AND EXPENDITURE STATEMENT	VIEW (ViewPdfFiles.aspx?FileName=NGHNqrm6DSiW8t0kS0kyaMf1NgXhg1L5QQIFhtpunLUL0IXCXv9fkz5iwSqAM4mx)	ACADEMIC CALENDAR OF SCHOOL	VIEW (ViewPdfFiles.aspx?FileName=/zdpVPfvHEsr)
AVAILABILITY OF STAFF WITH KNOWLEDGE OF SOFTWARE/SCANNING/GEO TAGGING/INTERNET?	YES	WHETHER SUFFICIENT GUARDS EMPLOYED FOR SAFETY?	YES
BEST PRACTICES OF SCHOOL	1. Teacher mentors for class 10 and 12. 2. Supporting student's leadership. 3. Following value calendar. 4. Staff members learning technology from each oth		

**OTHER INFORMATION**

MANDATORY ART EDUCATION FROM CLASS 1 TO 10 -TWO PERIOD A DAY	YES	WHETHER SELECTION OF TEXTBOOKS FOR ALL GRADES ARE AS PER NORMS ((SECTION-2.4.7 (A) OF AFFILIATION BYE-LAWS) ( <a href="http://cbseaff.nic.in/cbse_aff/attachment/onlineservices/affiliation-Bye-Laws.pdf">http://cbseaff.nic.in/cbse_aff/attachment/onlineservices/affiliation-Bye-Laws.pdf</a> ))?	YES
WHETHER LIST OF PRESCRIBED BOOKS ARE PUBLISHED ON SCHOOL WEBSITE WITH WRITTEN DECLARATION AS PER (SECTION-2.4.7 (B) OF AFFILIATION BYE-LAWS) ( <a href="http://cbseaff.nic.in/cbse_aff/attachment/onlineservices/affiliation-Bye-Laws.pdf">http://cbseaff.nic.in/cbse_aff/attachment/onlineservices/affiliation-Bye-Laws.pdf</a> )?	YES	WHETHER INFORMATION AS PER PARA (2.4.9 OF AFFILIATION BYE-LAWS) ( <a href="http://cbseaff.nic.in/cbse_aff/attachment/onlineservices/affiliation-Bye-Laws.pdf">http://cbseaff.nic.in/cbse_aff/attachment/onlineservices/affiliation-Bye-Laws.pdf</a> ) PUBLISHED ON THE SCHOOL WEBSITE ?	YES
WHETHER ALL GUIDELINES RELATED TO POCSO ACT COMPLIED WITH AS PER (SECTION-14.25 OF AFFILIATION BYE-LAWS) ( <a href="http://cbseaff.nic.in/cbse_aff/attachment/onlineservices/affiliation-Bye-Laws.pdf">http://cbseaff.nic.in/cbse_aff/attachment/onlineservices/affiliation-Bye-Laws.pdf</a> )?	YES	WHETHER ANNUAL REPORT CONTAINS INFORMATION AS PER (SECTION-14.5 OF AFFILIATION BYE-LAWS) ( <a href="http://cbseaff.nic.in/cbse_aff/attachment/onlineservices/affiliation-Bye-Laws.pdf">http://cbseaff.nic.in/cbse_aff/attachment/onlineservices/affiliation-Bye-Laws.pdf</a> )?	YES
WHETHER DISABLED STUDENTS FACILITATED AS PER (SECTION-14.15 OF AFFILIATION BYE-LAWS) ( <a href="http://cbseaff.nic.in/cbse_aff/attachment/onlineservices/affiliation-Bye-Laws.pdf">http://cbseaff.nic.in/cbse_aff/attachment/onlineservices/affiliation-Bye-Laws.pdf</a> )?	YES	WHETHER IN-SERVICE TRAINING ORGANISED AS PER (SECTION-16 OF AFFILIATION BYE-LAWS) ( <a href="http://cbseaff.nic.in/cbse_aff/attachment/onlineservices/affiliation-Bye-Laws.pdf">http://cbseaff.nic.in/cbse_aff/attachment/onlineservices/affiliation-Bye-Laws.pdf</a> )?	YES
WHETHER ANNUAL HEALTH CHECK-UP OF STUDENTS DONE AND THEIR RECORDS MAINTAINED ?	YES	NUMBER OF TEACHERS IN SCHOOL WHO DOWNLOADED CBSE SHIKSHA VANI	37

**PEDAGOGICAL PLAN**

<b>ADOPTION OF EXPERIENTIAL LEARNING PEDAGOGY -IN WHICH GRADES</b>	III,IV,V,VI,VII,VIII,IX,X	<b>WHETHER ANNUAL PEDAGOGICAL PLANS PREPARED, SUBMITTED AND IMPLEMENTATED ?</b>	YES
<b>NUMBER OF TEACHERS TRAINED ON THE ANNUAL THEME OF CBSE - EXPERIMENTAL LEARNING AND INNOVATIVE PEDAGOGY</b>	36		

**FEE STRUCTURE OF SCHOOL**

65278--NOTRE DAME ACADEMY NTPC PO BARH PATNA BIHAR

<b>CLASS</b>	<b>ADMISSION FEE (in Rupees)</b>	<b>TUITION FEE (in Rupees)</b>	<b>YEARLY DEVELOPMENT CHARGES (in Rupees)</b>	<b>ANNUAL/MONTHLY OTHER CHARGES FOR OTHER FACILITIES (in Rupees)</b>
<b>PRIMARY</b>	5000	1780	2500	1850
<b>MIDDLE</b>	5000	1970	2500	1850
<b>SECONDARY</b>	5000	2090	2500	1850
<b>SENIOR SECONDARY</b>	5000	3030	2500	1850



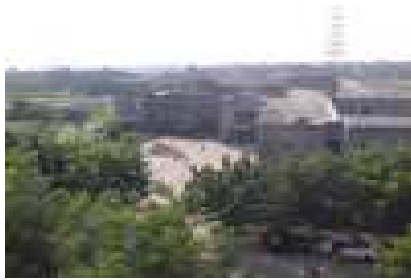
**PHOTO OF SCHOOL**

65278--NOTRE DAME ACADEMY NTPC PO BARH PATNA BIHAR

**SCHOOL PHOTOS**

Dated :

**GEO-TAGGED PHOTO**



**PLAYGROUND PHOTO**



**LIBRARY PHOTO**



**SCIENCE LAB PHOTO**



**COMPUTER LAB PHOTO**



**RAMP PHOTO**



**VIDEO**



**PHYSICS LAB PHOTO**



**CHEMISTRY LAB PHOTO**



**BIOLOGY LAB PHOTO**



**TOILET PHOTO**



**CWSN TOILET PHOTO**



**MATHS LAB PHOTO**



**ADDITIONAL INFORMATION**

65278--NOTRE DAME ACADEMY NTPC PO BARH PATNA BIHAR  
Dated : 16/08/2023

<b>U-DISE CODE</b>	10282300808
<b>SCHOOL LOCATED IN RURAL OR URBAN AREA</b>	RURAL
<b>HABITATION NAME/MOHALLA</b>	NTPC CAMPUS
<b>VILLAGE NAME (FOR RURAL)/WARD NUMBER (FOR URBAN)</b>	DHIVAR
<b>VILLAGE PANCHAYAT NAME (FOR RURAL)</b>	DHIVAR
<b>PIN CODE</b>	803215
<b>CLUSTER RESOURCE CENTER NAME</b>	PANDARAK
<b>CD BLOCK MANDAL/TALUKA NAME</b>	PANDARAK
<b>EDUCATIONAL ZONE/MANDAL/TALUKA NAME</b>	PANDARAK
<b>ASSEMBLY CONSTITUENCY</b>	MOKAMA
<b>MUNICIPALITY</b>	N/A
<b>IS THIS SCHOOL APPROACHABLE BY ALL WEATHER ROAD</b>	YES
<b>IS THIS A SPECIAL SCHOOL FOR CWSN</b>	NO
<b>IS THIS A SHIFT SCHOOL</b>	NO
<b>IS THIS A RELIGIOUS MINORITY SCHOOL</b>	YES
<b>TYPE OF RELIGIOUS MINORITY SCHOOL</b>	CHRISTIAN
<b>NUMBER OF ACADEMIC INSPECTIONS DURING LAST ACADEMIC YEAR</b>	0
<b>NUMBER OF VISITS BY CRC COORDINATOR DURING LAST ACADEMIC YEAR</b>	0
<b>NUMBER OF VISITS BY BLOCK LEVEL OFFICER DURING LAST ACADEMIC YEAR</b>	1
<b>IS THIS A RESIDENTIAL SCHOOL</b>	NO

**SCHOOL PARTICULARS FOR ELEMENTARY SCHOOLS ONLY**

65278--NOTRE DAME ACADEMY NTPC PO BARH PATNA BIHAR  
Dated : 16/08/2023  
199

<b>NUMBER OF INSTRUCTIONAL DAYS DURING LAST ACADEMIC YEAR</b>	199
<b>SCHOOL HOURS FOR CHILDREN PER DAY (CURRENT YEAR)</b>	6

SCHOOL HOURS FOR TEACHERS PER DAY (CURRENT YEAR)	7
ARE PUPIL CUMULATIVE RECORDS BEING MAINTAINED?	NO
ARE PUPIL CUMULATIVE RECORDS SHARED WITH PARENTS?	NO
NUMBER OF STUDENTS PROVIDED IN SPECIAL TRAINING (CURRENT YEAR)	0
NUMBER OF STUDENTS ENROLLED IN SPECIAL TRAINING (PREVIOUS YEAR)	0
NUMBER OF STUDENTS COMPLETED SPECIAL TRAINING (PREVIOUS YEAR)	0
HAS SCHOOL MANAGEMENT COMMITTEE (SMC) BEEN CONSTITUTED?	YES
LANGUAGES TAUGHT AT PRIMARY STAGE: MENTION THE NAME OF LANGUAGE OPTIONAL	ENGLISH, HINDI
IS ANGANWADI CENTRE IN OR ADJACENT TO SCHOOL? OPTIONAL	
NUMBER OF GIRLS RECEIVED SELF DEFENCE TRAINING	0
TOTAL NUMBER OF GIFTED CHILDREN IDENTIFIED IN SCHOOL	145
NUMBER OF MEETINGS HELD BY SMC DURING LAST ACADEMIC YEAR	1
WHETHER SMC PREPARE THE SCHOOL DEVELOPMENT PLAN	YES
WHETHER SEPARATE BANK ACCOUNT FOR SMC NO IF YES, PROVIDE THESE DETAILS	
BANK NAME	
ACCOUNT HOLDER'S NAME	
BANK ACCOUNT NUMBER	
IFSC CODE	
WHEN WAS THE TEXTBOOK RECEIVED FOR CURRENT YEAR?	NOT RECEIVED
WHETHER COMPLETE SET OF FREE TEXT BOOKS FOR TEACHERS LEARNING EQUIPMENT (TLE) RECEIVED?	NO
WHETHER TLE RECEIVED FOR EACH GRADE?	NO
WHETHER PLAY MATERIAL GAMES AND SPORTS MATERIAL AVAILABLE FOR EACH GRADE?	YES
ARE THE MAJORITY OF PUPILS TAUGHT THROUGH THEIR MOTHER TONGUE AT PRIMARY STAGE? OPTIONAL	
NUMBER OF STUDENTS APPEARED IN STATE-LEVEL COMPETITION/OLYMPIADS/NATIONAL LEVEL COMPETITION	635

**SCHOOL PARTICULARS FOR SECONDARY AND HIGHER SECONDARY SCHOOLS ONLY**

65278--NOTRE DAME ACADEMY NTPC PO BARH PATNA BIHAR

Dated : 16/08/2023

119

NUMBER OF INSTRUCTIONAL DAYS DURING LAST ACADEMIC YEAR	119
SCHOOL HOURS FOR CHILDREN PER DAY (CURRENT YEAR)	6
SCHOOL HOURS FOR TEACHERS PER DAY (CURRENT YEAR)	7

ARE SCHOOL MANAGEMENT COMMITTEE (SMC) AND SCHOOL MANAGEMENT DEVELOPMENT COMMITTEE (SMDC) SAME? YES

IF NO, UPLOAD DETAILS OF SMDC

VIEW (ViewPdfFiles.aspx?)

FileName=3LSIXo75MyqXgZho/mekY6ZDKwGR2rLEE03BFGE4U9g=)

**PHYSICAL FACILITIES AND EQUIPMENTS**

65278--NOTRE DAME ACADEMY NTPC PO BARH PATNA BIHAR

Dated : 16/08/2023

NUMBER OF CLASSROOMS BY CONDITION			
PUCCA	PARTIALLY PUCCA	KUCHCHA	TENT
30	0	0	0
0	0	0	0
0	0	0	0
IS LAND AVAILABLE FOR EXPANSION OF SCHOOL ACTIVITIES?			YES
IS SEPARATE ROOM AVAILABLE FOR PRINCIPAL/HEAD TEACHER?			YES



10	0	0	0	0	0	0	1	0
11	0	0	0	0	0	0	0	0
12	0	0	1	0	0	0	0	0

**MID DAY MEAL INFORMATION** (Only for Government and Aided Schools)

65278--NOTRE DAME ACADEMY NTPC PO BARH PATNA BIHAR

Dated : 16/08/2023

STATUS OF KITCHEN SHED (If meal prepared in school)

SOURCE OF MDM (If meal not prepared in school)

**SPORTS INFORMATION**

65278--NOTRE DAME ACADEMY NTPC PO BARH PATNA BIHAR

Dated : 16/08/2023

AEROBICS  ATHLETICS  BASKETBALL  CHESS  FOOTBALL  HANDBALL  JUDO  KHO KHO  SWIMMING  TABLE TENNIS  VOLLEYBALL  
 ARCHERY  BADMINTON  BOXING  CRICKET  GYMNASTICS  HOCKEY  KABADDI  SHOOTING  TAEKWONDO  TENNIS  YOGA

DOES THE SCHOOL HAVE A MANDATORY SPORTS/GAMES PERIOD FROM CLASS 1 TO 12 EVERY DAY ? YES

**FACILITY INFORMATION**

65278--NOTRE DAME ACADEMY NTPC PO BARH PATNA BIHAR

Dated : 16/08/2023

**FACILITY PROVIDED TO PRIMARY STUDENTS**

FACILITY	GENERAL	SC	ST	OBC	MUSLIM MINORITY
FREE TEXT BOOKS	0	0	0	0	0
FREE UNIFORMS	0	0	0	0	0
STATE DEFINED INCENTIVES	0	0	0	0	0

**FACILITY PROVIDED TO UPPER PRIMARY STUDENTS**

FACILITY	GENERAL	SC	ST	OBC	MUSLIM MINORITY
FREE TEXT BOOKS	0	0	0	0	0
FREE UNIFORMS	0	0	0	0	0
STATE DEFINED INCENTIVES	0	0	0	0	0

**FACILITY PROVIDED TO CWSN STUDENTS**

FACILITY	ELEMENTARY	SECONDARY	HIGHER SECONDARY
BRAILL BOOKS/KITS	0	0	0
LOW VISION KIT	0	0	0
BRACES	0	0	0
CRUTCHES	0	0	0
WHEEL CHAIRS	0	0	0
CALIPERS	0	0	0
TRI CYCLES	0	0	0